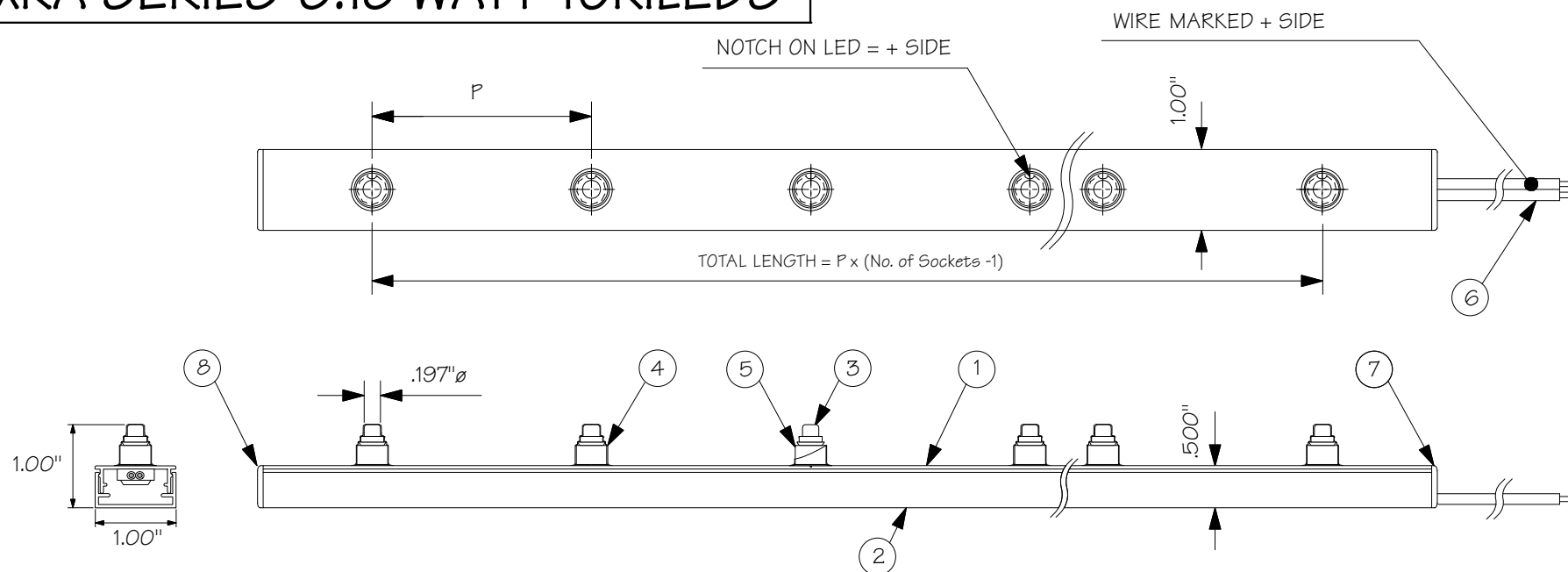


TXRA SERIES-0.10 WATT TOKILEDS®



CATALOG#	P (INCH)	EXTRUSION LENGTH	MAX. FIXTURE LENGTH
TXRA-2-(LED CODE)	2 ± .08"	96.5"	40'
TXRA-3-(LED CODE)	3 ± .08"	96.5"	50'
TXRA-4-(LED CODE)	4 ± .08"	96.5"	60'
TXRA-6-(LED CODE)	6 ± .08"	96.5"	75'
TXRA-12-(LED CODE)	12 ± .08"	96.5"	100'

0.1 WATT TOKILEDS® 8VDC/12.5mA				
PART#	LED CODE	COLOR	LUMEN	WAVELENGTH
TLED-WW	WW	2400K WHITE	2.7Lm	590.2
TLED-IW	IW	3000K WHITE	3.3Lm	577.0
TLED-WH	WH	6500K WHITE	4.2Lm	480.5
TLED-AM	AM	AMBER	0.6Lm	588.6
TLED-BL	BL	BLUE	0.8Lm	469.9
TLED-GR	GR	GREEN	3.3Lm	525.3
TLED-MG	MG	MAGENTA	1.0Lm	573.0
TLED-PL	PL	PURPLE	0.6Lm	578.9
TLED-RD	RD	RED	0.4Lm	625.4



TOKISTAR LIGHTING INC.

1015 E. DISCOVERY LANE
ANAHEIM, CA 92801
TEL: 714 772 7005 FAX: 714 772 7014
email: info@tokistar.com Website: tokistar.com

TXRA SERIES SUBMITTAL

CATALOG#: TXRA_-(LED CODE)

DATE: OCTOBER 10, 2013

DRAWN BY: R. CORDOVA

SCALE: 1:2

WEIGHT: 80g/FT. @ 2" O.C.

NO.

PART

MATERIAL

1	EXTRUSION COVER	ANODIZED ALUMINUM
2	EXTRUSION BASE	ANODIZED ALUMINUM
3	LED	SOLID STATE LED
4	CAP	SILICONE (CLEAR)
5	LAMP SOCKET	POLYCARBONATE WITH PLATED COPPER CONTACTS
6	LEAD WIRE	PVC INSULATION WITH PLATED #18 AWG X 2
7	END CAP (FEED END)	PVC
8	END CAP (DEAD END)	PVC